

WASHINGTON MUSEUM ASSOCIATION

WAMA

# MUSEUM MESSENGER

Volume 25 / Number 1

Winter 2015

## ARTS & HERITAGE DAY

*...the place to be  
on March 2 & 3, 2015!*



Arts & Heritage Day  
SPONSORS



Department of Commerce  
Innovation is in our nature.



### INSIDE

Message from the President.....	2	2015 WaMA Annual Conference in Goldendale .....	6-7
Be a Successful Arts & Heritage Pundit .....	3	Registrars to the Rescue .....	8-9
Arts & Heritage Day Workshop and Events .....	4-5	I-594 and Washington Museums.....	9
		Support Legislation to Help Fund Museums .....	10

## The WaMA Museum Messenger

is published by the Washington Museum Association, a 501(c)3 federally recognized non-profit organization consisting of institutions, businesses, and individuals. The WaMA mission is to promote increased professionalism in and communication among all museums within Washington State. All articles within this issue may be reproduced and circulated to staff with appropriate credit given to the Washington Museum Association and the contributing author.

### OFFICERS

**President:** Joseph Govednik, Curator,  
Foss Waterway Seaport, Tacoma  
**Vice-President:** Elizabeth P. Stewart, Museum  
Director, Renton History Museum, Renton  
**Secretary:** Cyndi Upthegrove, Managing  
Trustee, Highline Historical Society, Burien  
**Treasurer:** Colleen Schafroth, Executive Director,  
Maryhill Museum of Art, Goldendale  
**Past President:** Eric Taylor, Heritage Lead,  
4Culture, Seattle

### DIRECTORS

**Richard Castellano,** Executive Director,  
Island County Historical Society, Coupeville  
**Jacqueline Cook,** Repatriation Specialist/  
Collection Manager, Confederated Tribes  
of the Colville Reservation, Grand Coulee  
**Freya Liggett,** Museum Manager, Moses Lake  
Museum & Art Center, Moses Lake  
**Betsy Millard,** Executive Director, Columbia  
Pacific Heritage Museum, Ilwaco  
**Bill Rietveldt,** Curator of Exhibits and Programs,  
Wenatchee Valley Museum & Cultural Center,  
Wenatchee  
**Bill Tennent,** Executive Director, Jefferson County  
Historical Society, Port Townsend

### NEWSLETTER

**Editor:** Freya Liggett, [fliggett@cityofml.com](mailto:fliggett@cityofml.com)  
**Graphics & Layout:** Andy Granitto,  
[andy@yakimavalleymuseum.org](mailto:andy@yakimavalleymuseum.org)  
**Printing:** Instant Press, Yakima, WA  
**Publishing Dates:** January 10 and April 30.  
**Materials must be submitted a minimum of 6  
weeks prior to publication.**

### CONTACT WMA

**Visit:** [www.washingtonmuseumassociation.org](http://www.washingtonmuseumassociation.org)

**Question about your membership? Need to  
reach a WaMA Board Member? Have an item  
for Museum Messenger? A suggestion for the  
Annual Conference? Reach us by email:**  
[contact@washingtonmuseumassociation.org](mailto:contact@washingtonmuseumassociation.org)  
**Please mark email attention to:**

**Membership Coordinator:** David Lynx

**Webmaster:** David Lynx

**2015 Conference Program Chairs:**

Colleen Schafroth, Bill Tennent

**2015 Conference Local Arrangements:**

Colleen Schafroth

**Advocacy & Legislative Liaisons:**

Joseph Govednik, Susan Rohrer

**E-Messenger:** Contact Maya Farrar at:

[emessenger@washingtonmuseumassociation.org](mailto:emessenger@washingtonmuseumassociation.org)

## PRESIDENT'S MESSAGE

Joseph Govednik, President, WaMA



*Become a card-carrying member  
of your local heritage organizations ...today!*

The Washington Museum Association is expanding its statewide representation by welcoming three new talented museum professionals to the Board of Directors—Liz Steward, Ph.D., Museum Director of the Renton History Museum; Bill Rietveldt, Curator of Exhibits and Programs at the Wenatchee Valley Museum & Cultural Center; and Freya Liggett, Museum Manager at the Moses Lake Museum & Art Center. I would also like to extend a special thank-you to our outgoing Board Members, Brenda Abney and Maya Farrar. On behalf of everyone at WaMA, we greatly appreciate your years of dedication to aiding our mission to promote increased professionalism in and communication among all museums within Washington State.

Highlighting the focus of this issue of WaMA Messenger, it's time to mark your calendar for the first of WaMA's 2015 events, Arts & Heritage Day, March 3-4, at the Washington State Capitol in Olympia. The pre-event activities will include a workshop on Tuesday, March 3 followed by a reception, both hosted at the Coach House. The Heritage Caucus begins bright and early Wednesday, March 4. Join fellow museum professionals as we meet with our local State Representatives to discuss the Washington museum community's most pressing issues in 2015. Read more on this critical statewide event on pages 3-5 in this newsletter.

On a more personal note, as the newly appointed President of the Washington Museum Association, I want to take a moment to encourage you to reach out to your neighbors in the museum world. I have always valued community, and in such, I am a strong advocate of museums as valuable community assets. If you work at an art museum, reach out to your community counterpart in a history museum. If you work at a small historic house, reach out to an ethnic heritage group. A casual social call can set the foundation for future collaboration. These seemingly casual relationships are the first steps to richer storytelling, exhibit inspiration, complementary programs, and the holy grail of shared resources. Seek common ground and you will find that "a rising tide lifts all boats." That adage describes why I chose to join the Washington Museum Association. So take that extra step to become a member of your allied institutions, either individually or organizationally. This not only shares the wealth, but shows how you and your museum are engaged in Washington's vibrant museum community.

I look forward to seeing you all at the 2015 Arts & Heritage Day in Olympia!

Yours in Museums,

Joseph Govednik



# ***Be a Successful Arts & Heritage Pundit***

WaMA President - Joseph Govednik

## **Are you a first-timer to Washington's Arts & Heritage Day?**

I was last year, and I want to share some of my experiences and tips for successfully engaging with your local State Representatives. Arts & Heritage Day is not just a great way to discuss issues relevant to museums; it is an opportunity to collaborate with colleagues. First I recommend attending both days, including the workshops and reception on March 3 prior to the Heritage Caucus on March 4. The workshop will be a valuable resource on grant writing strategies (and it's free!). Later that evening, the reception at the Coach House is an opportunity to network and reflect. It was at the reception last year that Hillary Ryan from the Museum of Glass took me, and my director, under her wing. Ryan made appointments with all of the Representatives from our museum district and kindly took us along with her on a trek through the Capitol corridors.

Here are some tips I learned during my first Arts & Heritage Day which I would like to share:

- **Make an appointment.** This is the best way to grab 10 minutes of your Representative's time. If you drop in, you will unlikely be able to meet with them.
- **Be VERY kind to the staff.** The legislative aids and staff are the gatekeepers. You may only be able to meet with the legislative staff, and if so, do your best to impress them. They will pass your message along.
- **Bring a gift.** Something small, a treat from your gift shop, or even a t-shirt with your museum's logo – bring something tangible to remind your Representative of your visit. Also leave a brochure. You will be surprised by how small their offices are, so don't bring anything too big!
- **Be respectful of their time.** Keep your meeting within the time-frame. Stick to the key points of legislation (you will be handed talking points during the Caucus early in the morning).
- **Get online and plan ahead.** Review parking on the Capitol Campus. The Heritage Caucus meets in the Cherberg Building at 7 A.M. Arrive on time. Around 8 A.M. there is a break when you can enjoy refreshments and organize.
- **Take a stroll.** Be sure to walk through the campus and see the rotunda. We are fortunate to have such an architecturally significant Capitol building, so enjoy it!
- **Don't forget to drop a short note.** Thank your Representative, or their assistant, for their time!

I hope you find these tips helpful. I look forward to attending this year's Arts & Heritage Day and hope you can make it too. If you have any questions about the events or details please see our website [www.washingtonmuseumassociation.org](http://www.washingtonmuseumassociation.org).



## **MARK YOUR CALENDARS! 2015 Arts & Heritage Day**

### **TUESDAY, MARCH 3, 2015**

**Arts & Heritage Workshop and Reception**, at the State Capital Museum Coach House, 211 21<sup>st</sup> Avenue SW in Olympia, from 5 to 7 P.M. Sponsored by the Washington Museum Association. RSVP to Susan Rohrer at [susan.rohrer@wsa.wa.gov](mailto:susan.rohrer@wsa.wa.gov) or 360-586-0166 by February 23, 2015.

### **WEDNESDAY, MARCH 4, 2015**

**Arts & Heritage Day Kick-off** at Heritage Caucus at 7 A.M. in the Cherberg Building on the Capitol Campus. Sponsored by the Washington Museum Association and the Washington State Arts Alliance. <http://washingtonmuseumassociation.org> <http://wsaa.qwestoffice.net/>

March Workshop  
from Washington State Historical Society

## HERITAGE WORKSHOP SPOTLIGHT ON GRANTS

**Tuesday, March 3, 2015**  
**State Capital Museum Coach House**

10:00 A.M.—12:00 P.M.

*Grant Administrator Presentations*

1:00 P.M.—3:00 P.M.

*Small Group Discussions*

Heritage Capital Projects Fund Grant Coordinator Janet Rogerson, Humanities Washington Program Director Ellen Terry and staff from Building for the Arts present a workshop on successful grant applications and crafting a strong, grant funded project. Group presentations will be followed by small discussion groups to answer individual questions. Break for lunch from 12:00–1:00 P.M. Register Early, space is limited to 40 people. **RSVP by February 23.** For more information or to make a reservation, please contact Susan Rohrer at (360) 586-0166 or [susan.rohrer@wshs.wa.gov](mailto:susan.rohrer@wshs.wa.gov).



State Capital Museum Coach House

## 2015 HERITAGE CAUCUS

The Heritage Caucus meets regularly while the **Washington State Legislature is in session** to discuss heritage, arts, and other cultural and recreational issues. Organized in 1990, the Caucus is a bipartisan gathering of state legislators and other elected officials; staff from state heritage, arts, and cultural agencies, and nonprofit organizations; and citizens interested in supporting Washington's cultural, heritage and the arts. The Heritage Caucus is co-chaired by [Sen. Jim Honeyford \(R-15th\)](#) and [Rep. Kevin Van De Wege \(D-24th\)](#), and co-staffed by the Washington State Historical Society and the Washington State Arts Commission.

**The Heritage Caucus is currently accepting proposals for presentations during the 2015 legislative session.**

As a reminder, presentations need to be 10 minutes or less, and must fit into one of the following prioritized categories:

- Groups/Consortiums working together on legislation
- Immediate policy issues; pending legislation; current initiatives
- Relevant or upcoming policy issues; proposed future legislation or initiatives
- Overviews of agency and heritage organization activity (current exhibits, programs, etc.)

Please keep in mind that the budget will continue to be the focus of the Legislature this session, and we will be reserving significant time for discussions related to the budget and implementation policies.

**Provide the following information in your proposal:**

1. Presentation title.
2. Names, titles and organizational affiliation of presenters.
3. Detailed outline of your presentation, including its priority category from the list above.
4. Technological needs (DVD player, computer, internet access, projector and screen are available.
5. If needed please provide preferred dates (we can't guarantee you'll get your selection but we will try our best to accommodate requests).

**...and send it via email to:**

**Mark Vessey** [mvessey@wshs.wa.gov](mailto:mvessey@wshs.wa.gov)

# ARTS & HERITAGE DAY

## Arts & Heritage Day Schedule at a Glance

### Tuesday, March 3, 2015 at the State Capital Museum

**10:00 A.M.-12:00 P.M.**

Heritage Workshop/Grant Administrator  
Presentations, Coach House

**1:00-3:00 P.M.**

Heritage Workshop/Small Group Discussions,  
Coach House

**5:00-7:00 P.M.**

Arts & Heritage Evening Reception with Legislators,  
Coach House

### Wednesday, March 4, 2015 on the State Capitol Campus

**7:00-8:00 A.M.**

Heritage Caucus, Cherberg Building, A/B/C Room

**8:00-3:00 P.M.**

Check-In Table, Cherberg Building, A/B/C Room

**8:30 A.M. & 9:30 A.M.**

Orientation, Information review for meetings with  
legislators, Cherberg Building, A/B/C Room

**11:45 A.M.-1:00 P.M.**

Luncheon & Program, Cherberg Building, A/B/C Room.

**All Day**

Meetings with Legislators, as scheduled



State Capital Museum



State Capital Museum Coach House



Washington State Capitol

#### EVENT SPONSORED BY:



**Department of Commerce**  
Innovation is in our nature.

humanities  
WASHINGTON

h  
w







## WASHINGTON MUSEUM ASSOCIATION CONFERENCE June 24-26 • Goldendale • 2015



**Maryhill Festival of Speed**  
Photo by Jon Huey

*(So much more than physical objects)*

**When considering the treasures of Washington's museums, it is usually collections that first come to mind.**

However, Washington's museums encompass so much more than physical objects. Much of their true value is reflected in the essential activities that add to their worth. With contributions of dedicated staff, boards, volunteers and patrons, Washington museums produce prized presentations, publications, and programming relating rich stories of diverse communities in unique ways.

With these many facets in mind, the Washington Museum Association invites you to share your perspectives on the Treasures of Washington Museums by proposing a session and attending the WaMA Annual Conference, June 24-26, 2015, at the Maryhill Museum of Art in Goldendale. (See "Call for Proposals" insert in this newsletter.)

Originally built as a hilltop mansion by Pacific Northwest entrepreneur Sam Hill, Maryhill was transformed into an art museum in 1926 at the urging of Hill's friend and pioneer of modern dance Loïe Fuller. Accessed by way of

## 2015 WaMA Annual Conference: *Treasures of Washington Museums* ...What Are Yours?

*(So much more than physical objects)*



washingtonmuseumassociation.org



**Diana Wojcik dancing at Maryhill Museum of Art**

Photo by Chris Clark

Washington's first asphalt road, the serpentine Maryhill Loops, the museum is situated above the stunningly scenic and storied Columbia River Gorge. Showcasing a world-class collection ranging from early 20th century European art works to an extensive American Indian collection, the museum is steward of over 5,300 acres of wild spaces, ranch lands, a sculpture park, incomparable vistas and overlooks. Maryhill Museum of Art stands as testament to the powerful personalities who transformed what *Time Magazine* dubbed "the world's most isolated art museum" into an attraction of worldwide renown.

Maryhill is neighbor to American Indian cultural centers, history museums, galleries and historical societies, highlighting an array of human experience in the region; museums dedicated to autos, airplanes, trains, carousels, and art; and observatories and parks with diverse cultural and natural history offerings. Come experience the nature, culture, history, and the *wineries* of this incredible corner of Washington State.

Join WaMA at Maryhill this summer, to celebrate the museum's 75<sup>th</sup> anniversary and the new Mary and Bruce Stevenson Wing. Take in the views, enjoy the camaraderie, and share your "treasures" at the 2015 Washington Museum Association Conference.

### Keynote Speaker Harriet Baskas

Harriet Baskas is the author of a half-dozen books, including *Hidden Treasures: What Museums Can't and Won't Show You* (Globe Pequot Press, 2014), and the producer of a 26-part series on the same subject for National Public Radio. During 2013 and 2014, as a member of the Humanities Washington Speaker Bureau team, she presented a program about hidden treasures in Washington State Museums in cities throughout the state.



**Harriet Baskas**

Baskas is an award winning writer and radio producer and the former manager of community radio stations in Oregon and Washington—KBOO, KMUN and KBCS. She currently contributes to USA Today, NBC News Travel, TODAY.com, CNBC Road Warrior and other national outlets as well to her own blog, StuckatTheAirport.com, writing most often about airports, air travel, business travel, general travel and, whenever possible, museums.

# Registrars to the Rescue (R2R)

## Moving is For the Birds

In a scenario likely familiar to many museum professionals, Jefferson County Historical Society's collections were once "permanently stored" in several locations—from the basement of Peninsula College, across Fort Worden, to the crawl spaces of Port Townsend's City Hall. Anticipating a smooth relocation, a large part of the JCHS's collections were packed in somewhat of a hurry, with very limited funds, for what was hoped would be very



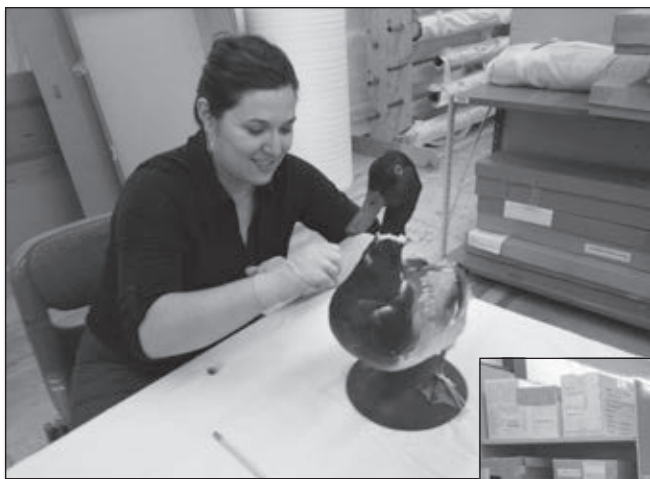
temporary storage at Fort Worden while the old City Hall underwent massive structural reinforcement and renovation. Two years and \$1.6 million later, JCHS built a new collection building to finally house its artifacts and archives under one roof.

"Since moving collections into the building, I have begun the long term process of unpacking,

photographing, and moving objects into permanent storage," explained JCHS Collection Manager/Exhibition Designer Becky Shurmann. Shurmann focused on rehousing the most vulnerable collections first. One such sensitive collection included twenty eight 130 year-old taxidermy birds donated by one of Port Townsend's first families.

Inspired by programs such as Reinforcement Crew and White Glove Gang of the Mid-Atlantic Museum Association, Registrars to the Rescue completed its third annual project

sponsored by the Washington Museum Association and Art Works Fine Art Services of Seattle/Portland. On June 18, 2014, museum registrars from around the state donated their time to rehouse the JCHS's



**Above: Lissa Kramer**  
(Programs Coordinator,  
Issaquah History Museums)

**Right: Joseph Govednik**  
(Curator of Collections &  
Volunteer Manager, Foss  
Waterway Seaport, Tacoma)





# I-594 AND WASHINGTON MUSEUMS

Dear Fellow WaMA Members,

We have had inquiries regarding the passage of I-594 and what impact this has on museums. This law went into effect on December 4, 2014 and affects the sale, gifting, and loaning of firearms. Although the law goes into effect December 4, the date of enforcement may be sometime next year, as laws passed by initiative need to go through the legislature to be codified as an RCW prior to enforcement. Since the only date we have at present is December 4, 2014, we recommend using this date to error on the side of caution. After reviewing the law and consulting with other legal and museum professionals, the Washington Museum Association recommends that all Washington museums should comply with this law. Because this law affects existing loan agreements and the process by which museums handle firearms loans and gifts, we recommend the following:

- Museums are not exempt from this law.
- Notify any lenders of firearms that their property may be subject to I-594\*, and that the conditions of the loan may have changed.
- If your museum has a current firearm loan subject to I-594, and the loan period ends on or after December 4, 2014, then the loan must be returned to the original owner via a federally licensed firearms dealer (FFL).
- This law is not retroactive, so museums currently possessing loaned firearms need not take any action to maintain legal possession of affected firearms.
- If your museum takes an incoming loan or gift of a firearm subject to I-594, then it must be transferred through an FFL.
- Museum to museum transfer of firearms subject to I-594 should be transferred via FFL on or after December 4, 2014.
- Museums that borrow or possess firearms should review their loan agreement documentation as this law would impose additional obligations to loans involving firearms. Furthermore, this documentation should designate a staff person as the transferor/transferee of such objects affected by I-594.

\* Examples not subject to this law include firearms made prior to January 1, 1899, black powder arms regardless of manufacture date, and permanently deactivated arms.

It is our recommendation that museums should comply with all laws to the best of their ability, and inform lenders of objects to any possible changes to original loan agreement. This information **should not be considered legal advice**, just an opinion from the WaMA. If you have any questions about this matter we urge you to discuss with your museum's legal counsel.

Yours in Museums,

Joseph Govednik, President, Washington Museum Association

Photo at left:

**R2R Team 2014 (left to right):**

Angela Neller  
(Wanapum Heritage Center)

Loren Berg and Anna Berg  
(Maryhill Museum of Art)

Chris Cadenhead  
(MOHAI/Pacific Science Center)

Lissa Kramer  
(Issaquah History Museums)

Scotty Enderle  
(Art Work Fine Art Services)

Becky Schurmann, host  
(Jefferson County Historical Society)

Victorian ornithological collection. R2R volunteers spent one full day unpacking, condition reporting, mounting (where necessary), and rehousing the sensitive specimens. "R2R's work allowed us to cross another collection off the 'to-do' list... It was rewarding to work with other museum professionals and exchange ideas and information about the work we do," said Shurmann. Since the project, several of the specimens have been installed for public display.

Many thanks to the R2R volunteers who assisted with the Jefferson County Historical Society project: Anna Berg, *Maryhill Museum of Art*; Loran Berg, *Maryhill Museum of Art*; Chris Cadenhead, *MOHAI/Pacific Science Center*; Scotty Enderle, *Art Work Fine Art Services*; Rebecca Engelhardt, *Museum of Glass*; Joseph Govednik, *Foss Waterway Seaport*; Lissa Kramer, *Issaquah History Museums*; Angela Neller, *Wanapum Heritage Center*; and Laura Reutter, *Jefferson County Historical Society*.



Cultural Access Washington

For Arts, Science,  
and Heritage

## SUPPORT PENDING LEGISLATION TO HELP FUND OUR MUSEUMS AND CULTURAL ATTRACTIONS

### To WaMA Members, Trustees, and Supporters:

*With the upcoming WA legislative session we have an opportunity for a new state law that will provide long term support for museums and other nonprofit cultural attractions. But we need your help to make it happen!*

**How?** The bipartisan bills we are introducing this session will **allow local voters to approve a small tax increase that will be dedicated to funding local cultural attractions in their own communities.** St. Louis and Denver have been doing this successfully for decades. If **local** voters can get the right to tax themselves to support their **local** cultural institutions, this would be funded from a 0.1% increase the **local** sales tax **or**, they can collect the same amount through property taxes. The attached “**How the Cultural Access Law Will Work**” describes the details more fully. You can find out more on the CAWA website: [www.culturalaccesswa.org](http://www.culturalaccesswa.org).

**Why is it important for our museums and our communities?** Across the state, the 0.1% sales tax would generate approximately \$117,139,000 in support of cultural nonprofits. A portion of these funds will be shared with nonprofit cultural venues in each county and can be used to build educational programming and improve access for disadvantaged audiences. Take a look at the table on the right to see how much would be collected in your county. **Museums take note: if your annual revenues are under \$1.25M OR if you are a museum of any size outside King County, you can also use these funds for capital projects in addition to supporting the operating costs of additional outreach.**

We all know museums serve a critical role for our schools, providing programs that align with national and state learning standards. **We do what schools cannot do alone: we provide peak experiences for students that focus on self-expression, history, and enjoyment — enriching lives in the process and creating more fully engaged generations for the future.** Plus, this law will help museums bring students to their location or, in many cases, take programs to the schools.

**What can you do to help? Please call, write, or email your elected legislators and show your support!** If you happen to know other representatives, please reach out to them too. We will only be successful if our elected officials hear from us. **Share this opportunity with friends and supporters in your community and ask for their help, let our legislators know that this financial support will make a significant difference.**

You can find the contact information for your museum’s address and your personal address at: <http://app.leg.wa.gov/DistrictFinder/>. **They need to hear from you soon — the legislative session is already underway, so please ACT NOW.**

### ***Local Funds, Local Decisions, Local Access!***

*Cultural Access Washington is a 501(c)(3) whose sole mission is to pass legislation in support of nonprofits that are dedicated to interpreting the arts, history, science, and nature in Washington State*

Counties With Cultural Attractions Including Museums	
County	0.1% of WSST
Adams	\$ 277,053
Asotin	\$ 269,954
Benton	\$ 3,189,855
Chelan	\$ 1,454,689
Clallam	\$ 948,664
Clark	\$ 4,870,332
Columbia	\$ 77,708
Cowlitz	\$ 1,379,515
Ferry	\$ 46,713
Franklin	\$ 1,110,257
Grant	\$ 1,818,642
Grays Harbor	\$ 819,684
Island	\$ 743,814
Jefferson	\$ 378,424
King	\$ 46,093,341
Kitsap	\$ 3,319,687
Kittitas	\$ 706,409
Klickitat	\$ 208,243
Lewis	\$ 1,042,025
Lincoln	\$ 119,136
Okanogan	\$ 556,383
Pacific	\$ 227,104
Pierce	\$ 12,189,180
San Juan	\$ 365,328
Skagit	\$ 2,321,686
Skamania	\$ 84,422
Snohomish	\$ 11,172,615
Spokane	\$ 7,561,669
Stevens	\$ 373,425
Thurston	\$ 3,974,436
Walla Walla	\$ 737,040
Whatcom	\$ 3,433,470
Whitman	\$ 638,105
Yakima	\$ 3,214,688
Based on FY2013 WA State Sales Tax Data	

# 2015 SAVE THE DATE

**FEBRUARY 22-23**  
Museum Advocacy Day, Washington DC

**MARCH 3-4**  
Arts & Heritage Day, Olympia, WA

**APRIL 26-29**  
AAM Annual Meeting, Atlanta, GA

**JUNE 24-26**  
WaMA Annual Conference,  
Goldendale, WA

**SEPTEMBER 16-20**  
AASLH Annual Meeting, Louisville KY

**SEPTEMBER 22-24**  
IAM (Idaho Association of Museums),  
Moscow ID

**OCTOBER 11-13**  
OMA (Oregon Museums Association),  
Pendleton OR

**SEPTEMBER 16-20**  
Western Museum Association  
Annual Meeting, San Jose CA



## BUSINESS MEMBERS *support the businesses that support us:*

Art Work Fine Art Services, Inc.  
Artech Fine Arts Services • Atlas Fine Art Service  
Friends of the Karshner Museum  
Historical Research Associates, Inc.  
Kelly Art Deco Light Museum • Kite & Nail, Inc.  
Minotaur Mazes • NRG! Exhibits, LLC  
Office of the Secretary of State • STQRY  
Washington State Housing Finance Commission  
WEATHERHEAD Experience Design Group, Inc.  
Judy Wheeler • Workpointe • Works Consulting

## NEW MEMBERS

Claire Aldenhuysen • Sarah Aldrich • Amanda Allen  
Dorothy Cotton Banks • Amanda Benson • Amy Bozorth  
Gregory Brandell • Briana Brenner • Josh Buckner • Megan Buff  
Katie Burke • Mary Christensen • Marianna Clair • Sena Dawes  
Linda DeJesus • Casey Demory • Victoria Dennis  
Neill Thomas Dillon • Kitsap County Historical Society & Museum  
Esvelt Gallery • Adam Eisenberg • DuPont History Museum  
Michael Friedline • Rebecca Fronczak • William Goodwin  
Foss Waterway Seaport • Laura C Hall • Nina Hallett  
Rebecca Harmsen • Sean Harrison • Jamie Hascall  
Tamara Hayes • Jeanmarie Hayes • Calie Holden  
Christina Januszewski • Devon Kelley • Robert E Kelly  
Peter Kleinpapp • Account Name • NRG! Exhibits, LLC  
Kacey Lewis • Xiqian Li • Gracie Loesser • Justine Lopez  
Molly Mandeltort • Paul Martinez • Kelly Matson  
Brendan McCauley • Andrea Mercado • Nives Metrovic  
Jenny Meyer • Julian Miller • Marsha Moratti  
Othello Community Museum • Jill-Lynn Nunemaker  
Mary Petrich-Guy • Chris Prescott • Michelle Reichelt  
Hannah Ridenour • Maria Robinson • Kate Rosendale  
Michael Rzemien • Regan Samul • Catherine Sharon  
Rebecca J Schurman • Andrew Simeone • STQRY  
Sidney Museum and Arts Association • Paul Talpos  
Cheryl A Palyu • Erin Quinn Valcho • Iolene Webb  
Judy Wheeler • Sierra Young

### *Museum Messenger* NEWSLETTER AD RATES:

Half Page ( $4\frac{1}{2}'' \times 7\frac{1}{2}''$ ) \$250  
One-Third Page ( $4\frac{3}{4}'' \times 4\frac{1}{2}''$ )  
OR ( $2\frac{1}{4}'' \times 9\frac{1}{4}''$ ) \$160  
Quarter Page ( $3\frac{1}{2}'' \times 4\frac{1}{2}''$ ) \$135  
One-Sixth Page ( $2\frac{1}{4}'' \times 4\frac{1}{2}''$ ) \$90  
One-Twelfth Page ( $2\frac{1}{4}'' \times 2\frac{1}{2}''$ ) \$55

**To Inquire or Purchase:** contact *Museum Messenger*  
editor Freya Liggett at [fliggett@cityofml.com](mailto:fliggett@cityofml.com).

**Ad Preparation:** for production requirements before  
sending your materials, please contact Andy Granitto  
at [andy@yakimavalleymuseum.org](mailto:andy@yakimavalleymuseum.org).

Opinions expressed in the articles in this publication are those of the authors and do not necessarily reflect the views of WaMA. Unsolicited articles, photographs, and graphics are always welcome. WaMA reserves the right to edit material submitted.



## WAMA MEMBERSHIP BENEFITS ARE MANY...

- Network of people dedicated to museum advocacy, professional standards, clear communication, education, and diversity.
- Reduced registration fee for WaMA annual meeting conference, voting privileges for Board election and WMA direction.
- *Museum Messenger* newsletter, including articles, reports, photos, calendars, and job listings.
- e-Messenger internet news on important legislative issues, updates, job listings, and other current museum topics.
- WaMA website with a directory of Washington museums, resources, and regional news.

### Additional benefits for Institutional Members:

- Expanded website listing.
- Two conference registrations at WaMA rate.

### Additional benefits for Business Members:

- An exhibit table at the annual conference.
- Recognition in the WaMA *Museum Messenger* newsletter.

## JOIN TODAY!

(Fill out form at right)

## WaMA Membership Application

Please select one of the following membership choices in the Washington Museum Association:

Personal \_\_\_\_\_ Organizational \_\_\_\_\_  
 \_\_\_\_\_ \$20 Individual \_\_\_\_\_ \$30 Institutional (non-profit)  
 \_\_\_\_\_ \$10 Student \_\_\_\_\_ \$100 Business/Commercial  
 \_\_\_\_\_ \$10 Senior, 62+  
 \_\_\_\_\_ \$100 Patron

Name \_\_\_\_\_  
 (Mr/Ms/Miss/Mrs or Organization Name)

Title \_\_\_\_\_

Address \_\_\_\_\_

City \_\_\_\_\_ State \_\_\_\_\_ Zip \_\_\_\_\_

Phone \_\_\_\_\_ FAX \_\_\_\_\_

email \_\_\_\_\_

For Organizational members, please name Representative to act as voting agent and who will receive the WaMA mailings:

(Mr/Ms/Miss/Mrs) \_\_\_\_\_

(Title) \_\_\_\_\_

Payment:

\$ \_\_\_\_\_ Membership dues

\$ \_\_\_\_\_ Additional tax deductible contribution

\$ \_\_\_\_\_ TOTAL (Check payable to WaMA)

By selecting a higher category of membership or giving a contribution in addition to your membership, you promote the Association's goals. Thank you for your support!

Please mail your information and check to:

WaMA Membership Coordinator  
 P. O. Box 10633, Yakima, WA 98909