

MUSEUM MESSENGER

Volume 23 / Number 1

Winter 2013



2013 WASHINGTON STATE HERITAGE CONFERENCE February 5, 2013 Red Lion Hotel, Olympia

The Washington State Historical Society is partnering with ArtsWA (Washington State Arts Commission), the Washington State Arts Alliance, and the Washington Museum Association for the 2013 Heritage Conference. This year's conference, *The Art of Heritage*, will take place at the Red Lion Hotel in Olympia on February 5, 2013. The Conference also features workshops at the State Capital Museum on Monday, February 4, on Collections Care and Effective Grant Writing, and precedes the annual Arts & Heritage Day on Wednesday, February 6.

At the conference on February 5, attendees will get an update on lodging tax, learn about initiatives to build new audiences for arts and heritage, see how other arts and heritage groups have used state grants, get tips on board development, and learn how to implement social media and how to work effectively with elected officials.

Conference attendees will enjoy a special session on *Museums, Arts and Historic Sites Synergy*. The spotlight event will be a noon keynote address by noted author Carol Kammen, AASLH's columnist for "On Doing Local History." She will speak on *Clio and Her Sisters: Integrating Arts and*

(continued on page 3)

INSIDE

Message from the President.....	2	Arts & Heritage Day Schedule	4
Arts & Heritage Reception	3	Registrars to the Rescue	5
Save the Dates in 2013	4	2013 WMA Annual Conference in Ellensburg	6-7

WMA Museum Messenger is published by the **Washington Museum Association**, a 501(c)3 non-profit organization consisting of institutions, businesses, and individuals. The WMA mission is to promote increased professionalism in and communication amongst all museums within Washington State. All articles within this issue may be reproduced and circulated to staff with appropriate credit given to the Washington Museum Association and the contributing author.

OFFICERS

President: Eric Taylor, Heritage Lead, 4 Culture, Seattle
Vice-President: Maya Farrar, Operations Manager, Museology Graduate Program, University of Washington, Seattle
Secretary: Vicki Gehl Blackwell, Curator, Exhibits & Collections, Harbor History Museum, Gig Harbor
Treasurer: Kirsten Schober, Manager, Liberty Theater, Waitsburg
Past President: Brenda Abney, Museum Director, Wenatchee Valley Museum & Cultural Center

DIRECTORS

Betsy Millard, Executive Director, Columbia Pacific Heritage Museum, Ilwaco
Angela Neller, Curator, Wanapum Heritage Center, Beverly
Colleen Schafroth, Executive Director, Maryhill Museum of Art, Goldendale
Bill Tennent, Executive Director, Jefferson County Historical Society, Port Townsend
Susan MG Tissot, Executive Director, Clark County Historical Society & Museum, Vancouver

NEWSLETTER

Editor: Joseph Govednik, j.govednik@fosswaterwayseaport.org
Graphics & Layout: Andy Granitto, andy@yakimavalleymuseum.org
Printing: Instant Press, Yakima, WA
Publishing Dates: January 10 and April 30.
 Materials must be in the hands of the editor 6 weeks prior to these dates to be considered for inclusion.

CONTACT WMA

Visit: www.washingtonstatemuseums.org
Question about your membership?
Need to reach a WMA board member?
Have an item for Museum Messenger?
A suggestion for the Annual Conference?
 Reach us by sending an email: contact@washingtonstatemuseums.org
 Please mark email attention to:
Membership Coordinator: David Lynx
Webmaster: David Lynx
2013 Conference Program Chairs: Angela Neller, Eric Taylor
2013 Conference Local Arrangements: Angela Neller
Advocacy & Legislative Liaisons: Eric Taylor, Susan Rohrer, Brenda Abney
E-Messenger: Maya Farrar at: emessenger@washingtonstatemuseums.org
Regional News – moved to website: www.washingtonstatemuseums.org.

PRESIDENT'S MESSAGE



Eric Taylor – President, WMA

The New Year brings opportunities for fresh starts and renewed commitments within our personal lives and careers. For members of the Washington Museum Association, the beginning of 2013 is a time for marking calendars and saving dates for upcoming advocacy and networking events that advance the work of our field. Annually, the two occasions most significant to the WMA are February's Arts & Heritage Day in Olympia, and June's Conference in Ellensburg.

This year, Arts & Heritage Day has expanded to three full days of happenings, thanks to the Washington State Historical Society partnering with ArtsWA (the new nickname for the Washington State Humanities Commission), the Washington State Arts Alliance, and WMA. Together, we will present the Heritage Conference, *The Art of Heritage*, at Olympia's Red Lion Hotel on Tuesday, February 5, preceding the cultural community's all-day schedule of meetings with legislators, led by WSAA, on Wednesday, February 6. In addition, WMA sponsors the reception for legislators, their aides, and their cultural constituency at the State Capital Museum on the evening of February 5. With so much to do and to advocate for over these two days, more than ever, this year's Arts & Heritage Day is worth traveling to and perhaps staying overnight in beautiful Olympia, known for its easily accessible unique downtown shopping and restaurants.

Now is the time to plan for participating in the 2013 Washington Museum Association Conference, *Museums at the Center of Community: Representative, Reflective and Relevant*, June 12-14 in Ellensburg. Following the success of 2012's record attendance in Seattle, this year's conference promises to continue the outstanding program content and exceptional networking events that WMA conference attendees have come to expect. With Ellensburg's central location, museum representatives from all around the state should find it especially convenient to take part in the 2013 WMA Conference.

– Eric Taylor, President, Washington Museum Association

Museum Messenger NEWSLETTER AD RATES:

Half Page (4 1/2" x 7 1/2") \$250	To Inquire or Purchase: contact <i>Museum Messenger</i> editor Joseph Govenick at j.govednik@fosswaterwayseaport.org .
One-Third Page (4 3/4" x 4 1/2")	
OR (2 1/4" x 9 1/4") \$125	
Quarter Page (3 1/2" x 4 1/2") \$100	Ad Preparation: for production requirements before sending your materials, please contact Andy Granitto at andy@yakimavalleymuseum.org .
One-Sixth Page (2 1/4" x 4 1/2") \$80	
One-Twelfth Page (2 1/4" x 2 1/2") \$55	

Opinions expressed in the articles within this publication are those of the authors and do not necessarily reflect the views of the WMA. Unsolicited articles, photographs, and graphics are always welcome. WMA reserves the right to edit material submitted.



Washington State Capital Building, Olympia

(Arts & Heritage Conference, continued from cover)

History. Online registration for the conference, workshops, and room reservation information is at: <http://www.washingtonhistory.org/heritageservices/conferences.aspx>. Deadline for registration is January 30.

For more information on the conference and workshops, contact Shanna Stevenson at: sstevenson@wshe.wa.gov.

Attendees are also invited to attend the February 5 evening reception at the State Capital Museum, sponsored by the Washington Museum Association in partnership with the Washington State Arts Alliance. RSVP for the reception to Susan Rohrer at: srohrer@wshe.wa.gov by January 25, 2013.

Join in Arts & Heritage Day on the Capital Campus in Olympia on Wednesday, February 6, starting with the 7:00 A.M. Heritage Caucus in Rooms A/B/C of the Cherberg Building. For more information, see: <http://wsartsalliance.com/>



Carol Kammen, keynote speaker

Arts & Heritage Reception

February 6, 2013 • 5:00-7:00 P.M.

State Capital Museum

211 21st Avenue SW, Olympia
 [One block off Capitol Way on 21st, between Water and Columbia Streets. 7 blocks south of the Capital Campus.]

The Washington Museum Association and the Washington State Arts Alliance invite all members, legislators, and elected officials to an evening reception at the historic Lord Mansion, home of the State Capital Museum and Outreach Center. This gracious setting



The State Capital Museum

provides a backdrop for an informal gathering to connect with colleagues and officials from around the state. Brief welcoming remarks will be presented by representatives from the WMA, WSAA, ArtsWA, and the Washington State Historical Society.

All state legislators and elected officials will be invited to attend the reception. Please visit the WMA website (www.washingtonstatemuseums.org) for an invitation you can download, personalize with a note, and send to your legislators. Make the most of this opportunity to communicate with peers and elected officials about the vital role museums, the arts, and heritage organizations play in communities across the state.

We thank you for your participation. Please RSVP to attend by contacting Susan Rohrer at 360-586-0166 or susan.rohrer@wshe.wa.gov.

SAVE THE DATES IN 2013

February 4-5	Heritage Conference, <i>The Art of Heritage</i> , Red Lion Hotel, Olympia
February 6	Arts & Heritage Day , State Capitol Campus, Olympia
February 25-26	Museums Advocacy Day 2013 , Washington, DC
April 22-24	Washington State Arts Alliance Cultural Congress , Seattle Center
May 19-22	American Alliance of Museums Annual Meeting , Baltimore, MD
June 12-14	WMA Conference, <i>Museums at the Center of Community</i> , Ellensburg
September 18-21	AASLH Annual Meeting , Birmingham, AL
October 9-12	Western Museums Association Annual Meeting , Salt Lake City, UT



BUSINESS MEMBERS

support the businesses that support us:

Adoniadis Retail Services
 Art Work Fine Art Services, Inc.
 Artech Fine Arts Services
 Atlas Fine Art Service
 Bill Speidel Enterprises/Underground Tour
 Burke Museum Traveling Exhibits
 Donning Company Publishers
 Executive Productions Seattle
 Formations Inc.
 Kron/Knights of Veritas
 Pacific Continental Bank
 Spacesaver Northwest
 Washington State Housing Finance Commission
 Works Consulting
 4Culture

NEW MEMBERS

Mary Barnes • Bonnie Beaudoin • Jessica Bellingham • Clara Berg
 Kevin Bicknell • Elizabeth Bollwerk • Andrew Bowen • JoAnn Bussa
 Stephanie Button • Coastal Interpretive Center
 Dorothy Cotton Banks • Amanda Dearolph • Alyssa DePlonty
 OdileDumbleton • Dianne Egan • Megan Ellingwood • Pam Fabela
 William Ferguson • FriendShop in The Seattle Public Library
 Greek-American Historical Museum of Washington State
 Katherine Hall • Hands On Children's Museum • Alveda Hansen
 Patricia Hartle • Mackensie Hotz • Sandra Jamieson • Anna Johnson
 Nancy C. Knox • Lissa Kramer • TalineKuyumjian • Jessica Luke
 Deborah Mangold • Lauren Marallo • Julia Marston
 Elizabeth K. Mauro • Matt McCallum • Emily McDade • Gary Menges
 Julia Miller • Barbara Minard • Minotaur Mazes • Sheila Mitchell
 ReneéMizar • Shelley Munnell • Monica Park • Ruth Pelz
 Laura Reutter • Bradley Richardson • Renato Rodriguez • Lily Rola
 Emily Schmierer • Lucas Sheetz • Lita Sheldon • Jenifer Slemp
 Kelley Staab • Ann Tally-Foos • Danning Tang • RebeccahTreser
 Paul Tupper • Ann Welch • Carly Wickell • Nathaniel Willson
 Erin Younger • Katherine Zappala

ARTS & HERITAGE DAY SCHEDULE

February 5, 2013

Evening Reception with Legislators

5:00 P.M. to 7:00 P.M.

State Capital Museum (211 21st Avenue SW, Olympia)

February 6, 2013

Capitol Campus, Olympia

7:00 A.M. to 8:00 A.M.

Heritage Caucus

Cherberg Building, A/B/C Room

8:00 A.M. to 3:00 P.M.

Check-In Table

Cherberg Building, A/B/C Room

ALL DAY

Meetings with Legislators

(as scheduled)

8:30 A.M. and 9:30 A.M.

Orientation

Cherberg Building, A/B/C Room

Information review for meetings with legislators

11:45 A.M. to 1:00 P.M.

Luncheon & Program

Cherberg Building, A/B/C Room

Reading of Governor's Arts & Heritage Day Proclamation

Mark Gerth, Executive Director, Washington State Arts Alliance

Eric Taylor, President, Washington Museum Association

Kris Tucker, Executive Director, ArtsWA

Visits and Greetings from State Legislators



As part of the 2012 WMA Annual Conference, museum professionals joined forces to help the Karshner Museum. A similar volunteer opportunity will accompany this year's annual conference in Ellensburg.

Registrars to the Rescue!

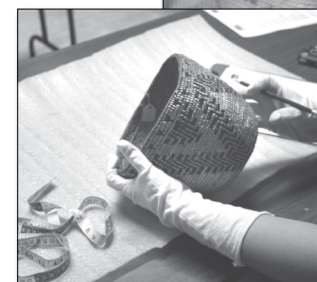
Inspired by the good works of our professional colleagues throughout the US, Washington State registrars and collections specialist started a new tradition in conjunction with the Washington Museum Association Annual Meeting—*Registrars to the Rescue*. For the 2012 WMA Annual Conference, the grant of a day of volunteerism was awarded to the Karshner Museum in Puyallup, Washington. This unique museum, under the umbrella of the Puyallup Public School District, requested help with condition reports for baskets and other ethnographic items from its Native American collections. As part of the Puyallup Public School District, the Karshner Museum is utilized as an educational resource by 21 elementary schools with a combined population of 10,196 students! A total of 11 professionals, including sponsorship by Art Work Fine Art Services of Seattle, lent their expertise to provide assessments that will support Karshner Museum staff in their quest for upgrading their HVAC system. The condition reporting will be used to strengthen the case for funding to support upgrading the HVAC system to better protect ethnographic collections. Thanks to all parties involved, the day was a huge success and even got coverage in the local press, highlighting the important work provided by collections care specialists in the community. Participating in Registrars to the Rescue is a great way to make connections with fellow museum professionals while giving back to smaller organizations that could literally use some extra helping hands for a day. The success of this program will continue with annual Registrars to the Rescue events at upcoming conferences. The committee is gearing up to repeat the program at the next WMA Annual Conference in Ellensburg on June 12, 2013. More information about how to get involved will come in the next issue of Museum Messenger!



Rebecca Engelhardt, Collection Manager, Museum of Glass, offers her expertise at the Karshner Museum in Puyallup



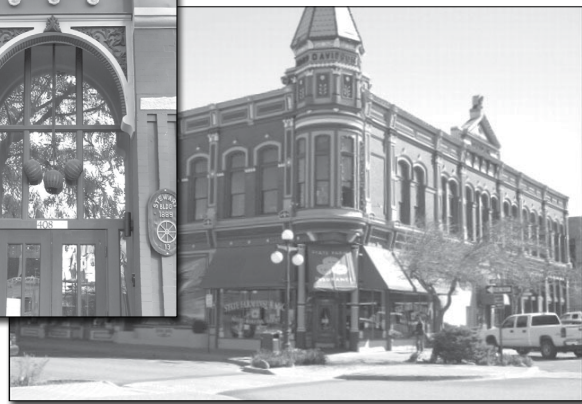
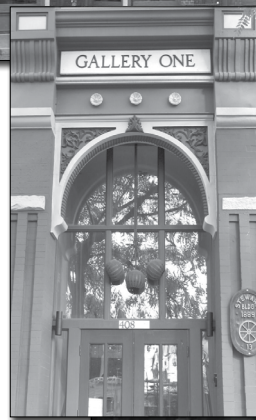
Heather Hull, Registrar at the Yakama Nation Culture Center Museum, inspects baskets at the Karshner Museum.



ELLENSBURG TO HOST 2013 WMA ANNUAL CONFERENCE ON



In Ellensburg, visit the Kittitas County Museum (left), Gallery One (lower left), and the historic Davidson Building (below).



East or west, large or small, museums in Washington State share common values that make them vital to the communities they serve. On June 12-14, museum representatives from all around the state will meet on common ground in Ellensburg for the 2013 Washington Museum Association Conference, *Museums at the Center of Community: Representative, Reflective, and Relevant*. Conveniently located geographically, Ellensburg, the county seat of Kittitas County, is an ideal site for convening the museum community from all corners of the state.

The area, historically a gathering place for the Kittitas band of the Yakama Indians and other Columbia plateau tribes, became a social hub for farming and ranching families after the Northern Pacific Railroad arrived in 1886. Following the destructive fire of July 4, 1889, the town quickly rebuilt. Many of the substantial structures from that time are still evident today in the culturally vibrant downtown, a National Historic District. Conference attendees will have opportunities to explore downtown, with its museums and galleries, plus cultural sites around the county, through events, tours, and the opening reception. Central Washington University, chartered in 1891 as Washington State Normal School, will provide the facilities for conference meetings and sessions during the weeklong break in the academic year.

Ellensburg Super 8 and Yakima River RV Park Welcome 2013 WMA Conference Attendees

The Ellensburg Super 8 Motel is offering reduced rate lodging for the WMA Conference. The Super 8 is the ideal choice for WMA guests. Located conveniently off I-90 with easy access to downtown Ellensburg, you will get great service and useful amenities at the Ellensburg Super 8.

Start your day with our free healthy SuperStart continental breakfast with fresh waffles, yogurt, fruit, cereals and more. Check the weather with free Wi-Fi Internet access. Swim in our heated indoor pool or relax in our spa. Fuel up day or night with free coffee available in the lobby. We offer fax and copy services and a guest laundry.

Room rates are \$70.88 + tax per night for single and double occupancy, and \$75.88 + tax per night for triples and quads.

The WMA block of rooms will be held only until May 16, and space is limited, so book early by contacting the Super 8 in Ellensburg at 509-962-6888. When reserving a room, be sure to note that you will be attending the WMA conference.

Yakima River RV Park

For those looking for something beyond the regular hotel room, the Yakima River RV Park is offering a reduced rate for recreation vehicles and campers.

Bring your family and pet. Vacation in your recreational vehicle. Camp in this quiet, peaceful RV Park in the country, away from freeway noise. Yakima River RV Park is a campground situated on a working ranch, just minutes south of Ellensburg, on the majestic Yakima River!

Receive 20% off your stay! RV overnight rates are \$33.60 (plus tax) daily for odd number spaces, \$28.00 (plus tax) daily for even number spaces (no sewer), and \$21.60 (plus tax) for spaces 33-36 (no power, water, sewer). For those interested in camping, one-person tent spaces are \$12.00 (plus tax), and two-person + tent spaces are \$20 (plus tax). For more information, visit <http://www.yakimarmv.com>

Space is limited, so book early by calling Darlene Grant at 509-925-4734. When reserving, be sure to note that you will be attending the WMA conference.

JUNE 12, 13, & 14

Within an era of rapidly changing demographics and technology, museums have the potential and obligation to represent, reflect, and remain relevant to the world around them. The 2013 Washington Museum Association Conference in Ellensburg will address these pertinent issues through sessions, keynotes, and networking opportunities. The WMA encourages you to initiate the dialog by submitting a conference session proposal. Please use the form conveniently located in this newsletter. Proposals for conference sessions will be accepted through February 15, 2013.

Whether a presenter or attendee, the Washington Museum Association Conference consistently offers numerous opportunities for information sharing and networking. Come to Ellensburg for the conference and experience the cultural variety and vibrancy of this historic place with your museum colleagues from around the state.



Sites just east of Ellensburg include Olmstead Place State Park (above), Wildhorse Wind and Solar Facility and Renewable Energy Center (below), and Ginkgo Petrified Forest State Park (bottom).



Museums at the Center of Community



Sites just west of Ellensburg include the Telephone Museum in Cle Elum (above) and the Thorp Mill in Thorp (right).



See the Sites of Central Washington while at the 2013 WMA Annual Conference

In the spirit of presenting the important role of museums, archives, and historical sites in defining community, the WMA conference provides several tour opportunities. You will learn how stories are told through historic preservation and local architecture, take a trip into the past by touring buildings locked in time, see how historic documents are preserved at the local university and library, and experience how Kittitas County offers historical information to the local community.

For those interested in finding out more about what Kittitas County has to offer, conference participants may visit a unique selection of historic sites and museums. A diverse array of sites include a historic flour mill that is still operational, a telephone museum, a homesteader's cabin, turn of the century buildings, renewable energy and wind turbines, a petrified forest, and many more fascinations! Tours will offer a wide variety of opportunities to experience Kittitas County history at its finest!

More information will be included in the next issue of *Museum Messenger*.

PRSR STD
US Postage
PAID
Yakima WA
Permit #1

Winter 2013



P.O. Box 10633
Yakima, WA 98909
Address Service Requested

WMA MEMBERSHIP BENEFITS ARE MANY...

- Network of people dedicated to museum advocacy, professional standards, clear communication, education, and diversity.
- Reduced registration fee for WMA annual meeting conference, voting privileges for Board election and WMA direction.
- *Museum Messenger* newsletter, including articles, reports, photos, calendars, and job listings.
- e-Messenger internet news on important legislative issues, updates, job listings, and other current museum topics.
- WMA website with a directory of Washington museums, resources, and regional news.

Additional benefits for Institutional Members:

- Expanded website listing.
- Two conference registrations at WMA rate.

Additional benefits for Business Members:

- An exhibit table at the annual conference.
- Recognition in the WMA *Museum Messenger* newsletter.

JOIN TODAY!
(Fill out form at right)

WMA Membership Application

Please select one of the following membership choices in the Washington Museum Association:

Personal	Organizational
• \$20 Individual	_____ \$30 Institutional (non-profit)
_____ \$10 Student	_____ \$100 Business/Commercial
_____ \$10 Senior, 62+	
_____ \$100 Patron	

Name _____
(Mr/Ms/Miss/Mrs or Organization Name)

Title _____

Address _____

City _____ State _____ Zip _____

Phone _____ FAX _____

email _____

For Organizational members, please name Representative to act as voting agent and who will receive the WMA mailings:

(Mr/Ms/Miss/Mrs)

(Title)

Payment:

\$ _____ Membership dues

\$ _____ Additional tax deductible contribution

\$ _____ TOTAL (Check payable to WMA)

By selecting a higher category of membership or giving a contribution in addition to your membership, you promote the Association's goals. Thank you for your support!

Please mail your information and check to:

WMA Membership Coordinator
P. O. Box 10633
Yakima, WA 98909